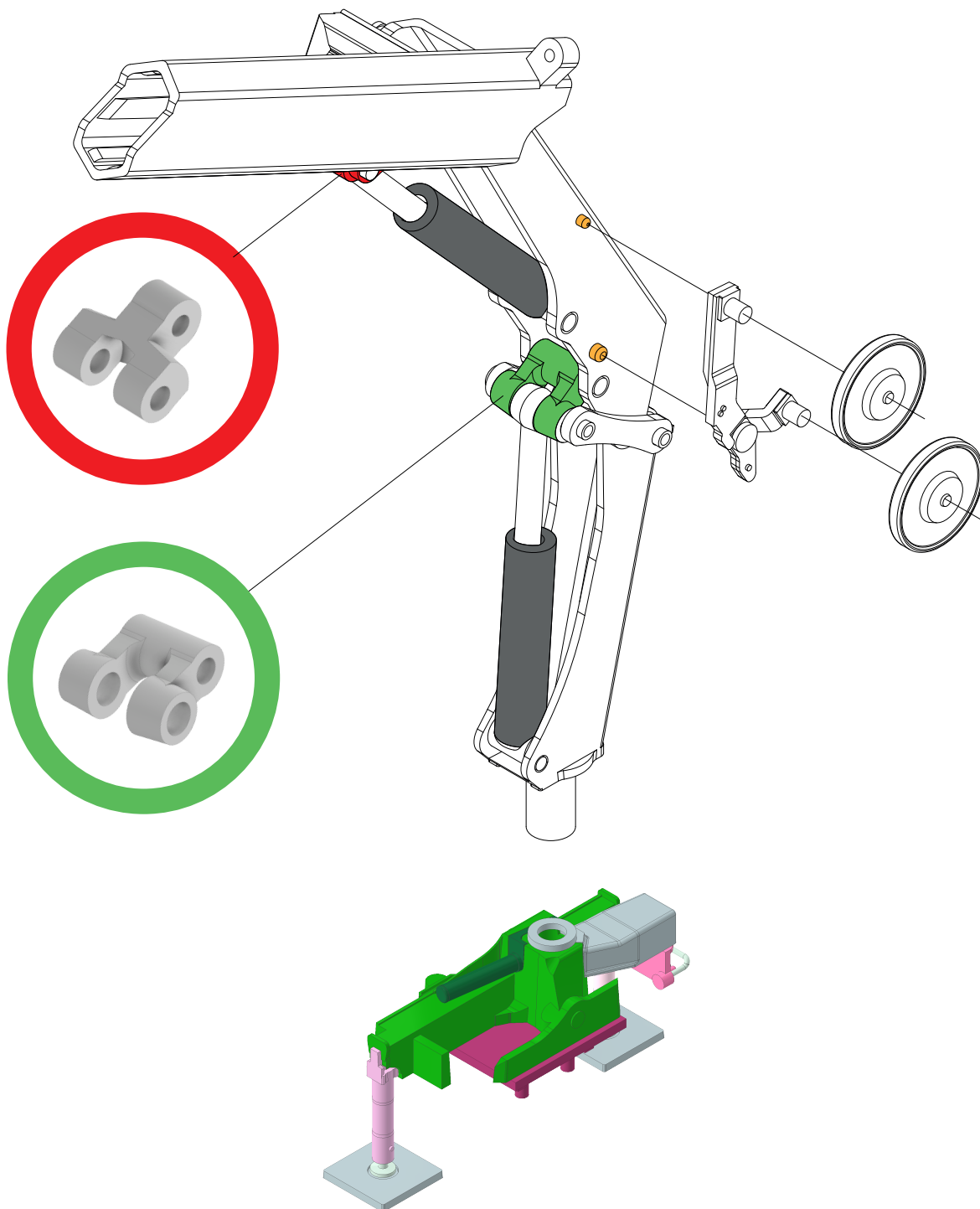


Belangrijke info

- Controleer alle delen voor u start.
- Vermijdt lijm op doorzichtige kunststof delen zoals de voorruit. Dit is niet meer te verwijderen.

Important information

- Check all parts before you start your modelkit.
- Avoid glue on clear plastic parts such as the window. This cannot be removed.

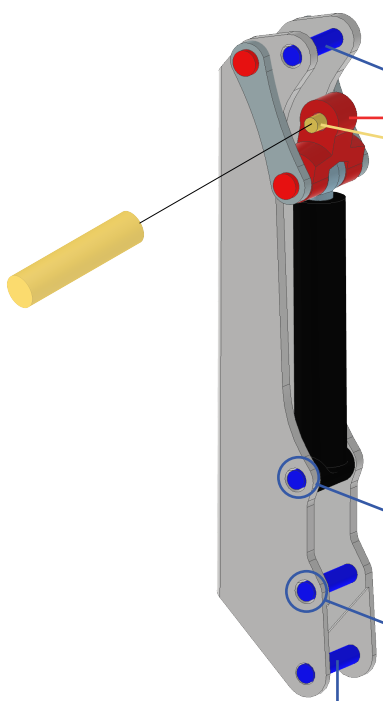
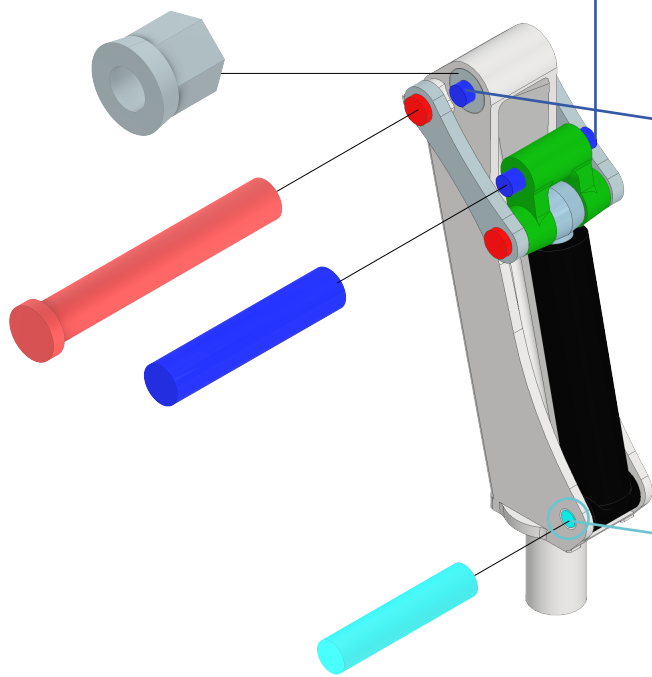
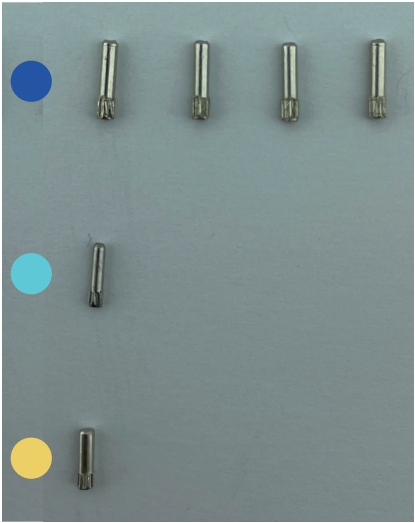


Belangrijke info

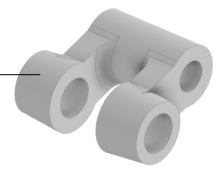
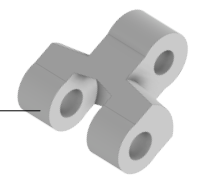
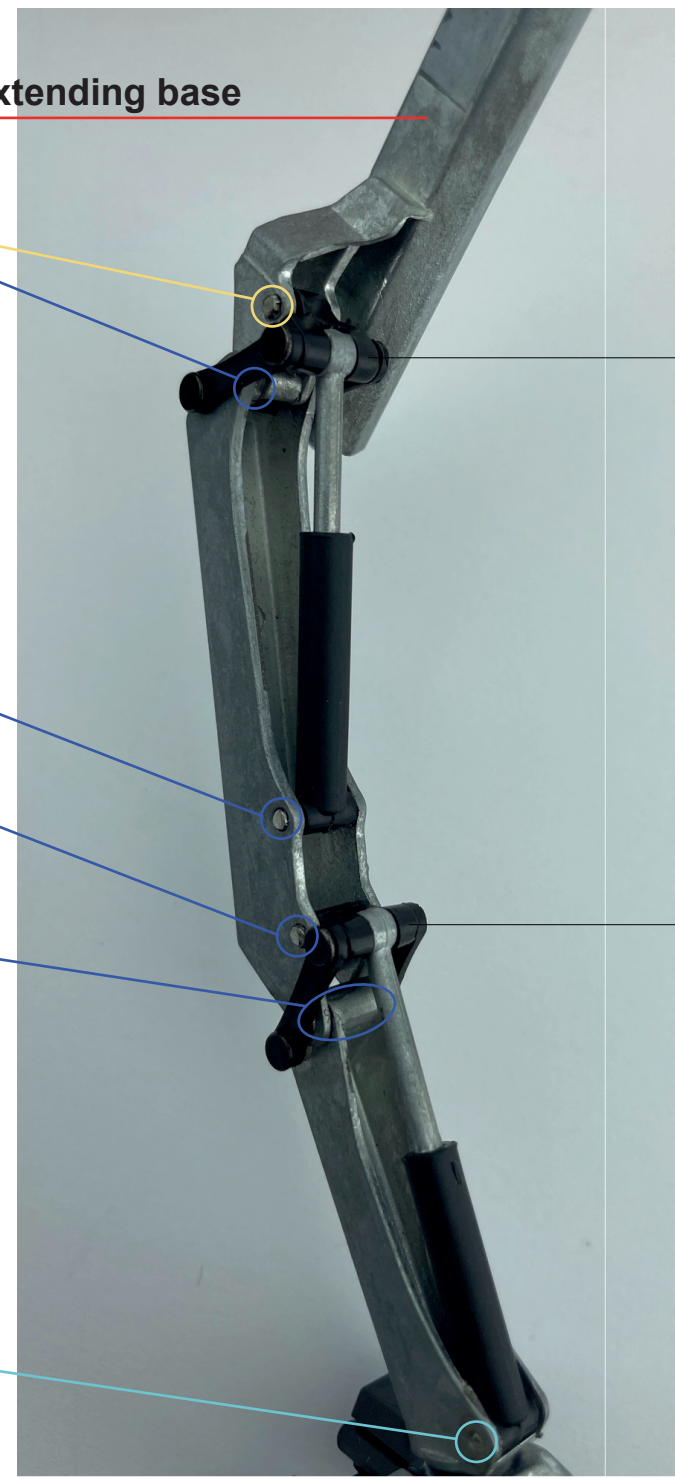
- Controleer alle delen voor u start.
- Vermijd lijm op doorzichtige kunststof delen zoals de voorruit. Dit is niet meer te verwijderen.

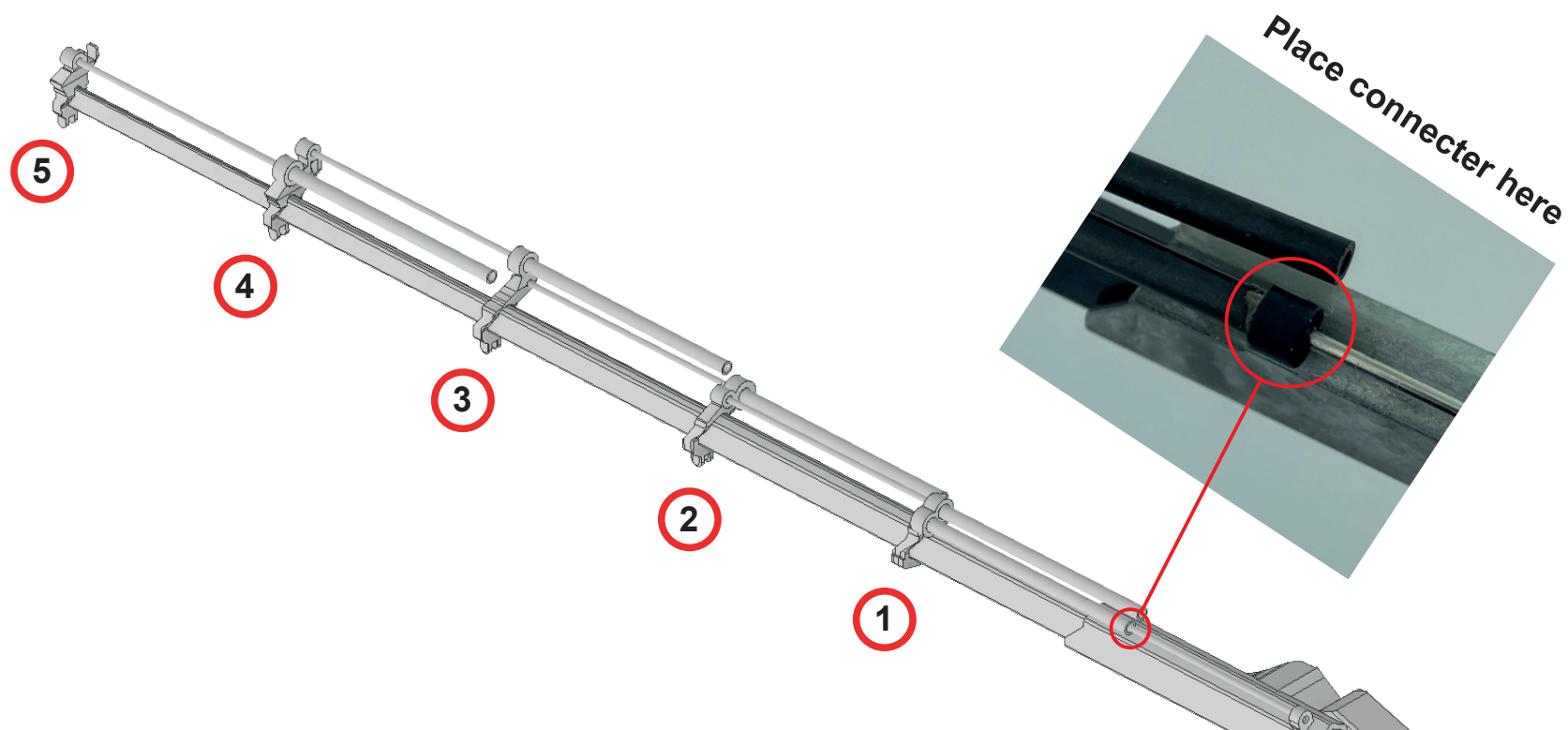
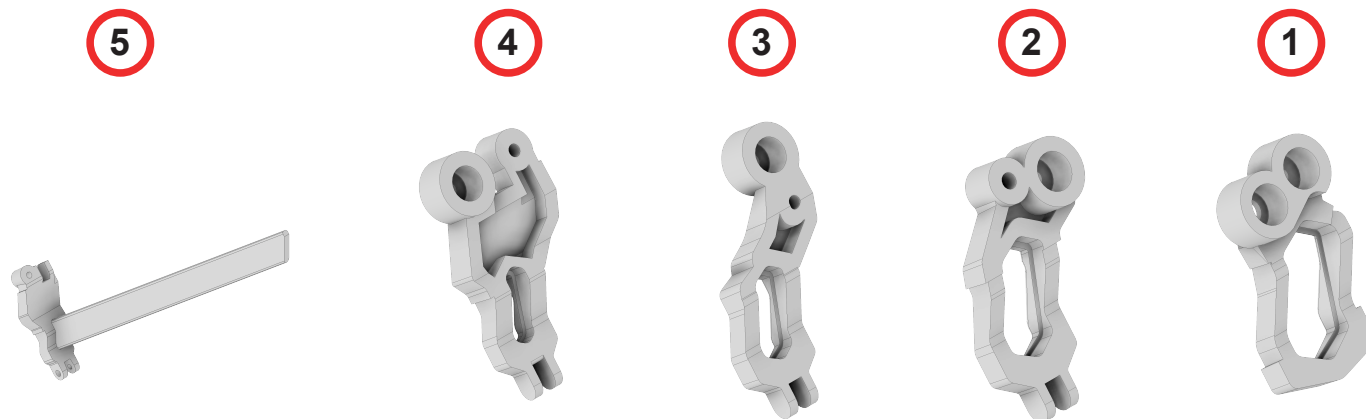
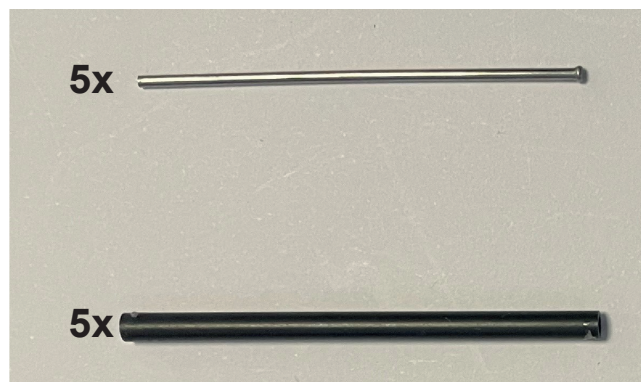
Important information

- Check all parts before you start your modelkit.
- Avoid glue on clear plastic parts such as the window. This cannot be removed.



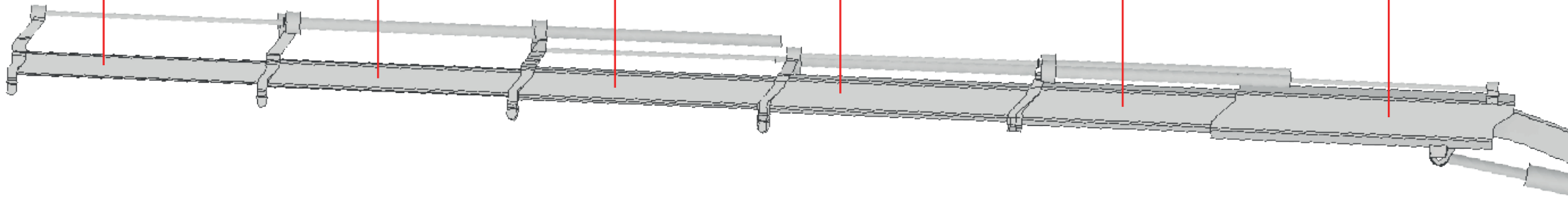
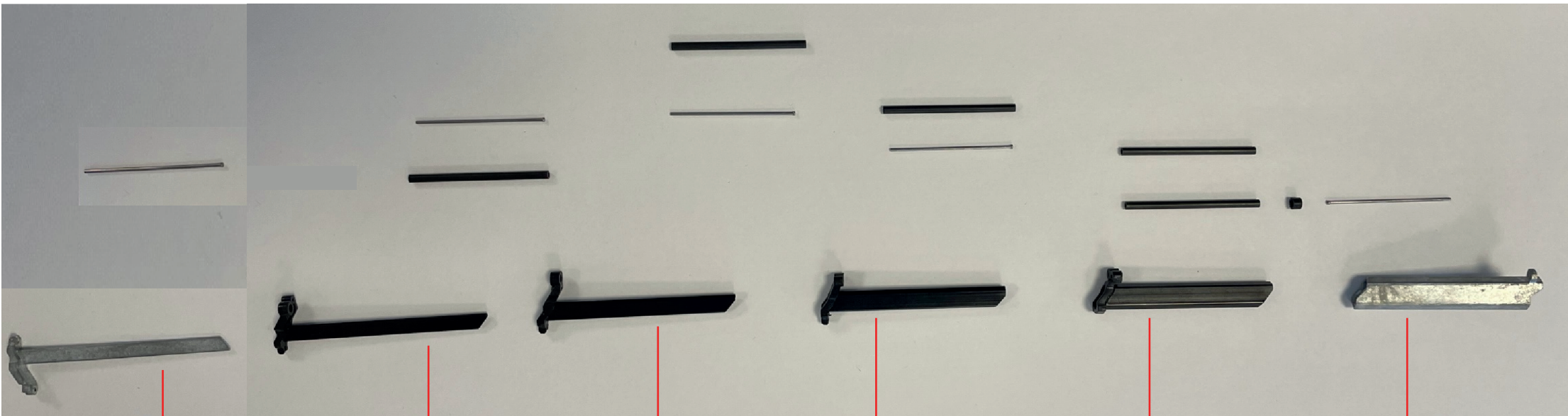
Assemble to zamac extending base





-Use glue to assemble the beams-





-Use glue to assemble the beams-